

THE
ULTRA
PHENOMENON
ANCHOR



Our mission

Everyone was born with a fantasy ...

We want to bring you back to your dream! The dream about freedom and independence. The dream about being anchored in your favorite bay overlooking a sunset far away from the stress of the everyday life. The dream that once made you buy a boat!

Unfortunately, for many it has not been going as once dreamed. You found out that anchoring is not always as simple and safe as you thought. You realized that often you do not feel comfortable being on anchor. Especially overnight. You do not feel at peace. Most of your boating friends have the same experience **so you accept it as a general fact. "Anchoring is not safe!"** You cannot fully rely on your anchor" Eventually, you end up spending much more time in tight spaces in crowded marinas which feel like shopping mall parking lots...

Not realizing there is a solution. **There is a way you can gain trust in anchoring.** The only solution is to use the right anchor. An anchor which was designed to change the way we look at anchoring. An anchor that is finally capable of making you feel comfortable and safe...

Allow your fantasy to guide you again...



The story

We are on the same wave as you

The sea and boats is our life and passion. We love them just like you do and that is why we understand you; we know what your dreams are and what you desire because we see the world through the same eyes. That is why we are able to give you the best – to experience adventures and to make your dreams come true aboard a boat with the utmost comfort, satisfaction and safety.



I have been in the maritime business for over 30 years. Over that time, I have tried almost all the roles that are related to this passion – I was and still am a yacht owner, customer as well as a salesman, but most of all, I am a fan of all boats and boating. My passion has also brought great business success: I have sold more than 700 boats and earned my name on the market.

In 2013, I met Yucel family and encountered their unique products. Their family business develops and produces revolutionary anchors and anchoring accessories. These products absolutely fascinated me! When I found out from my own experience how great they are, I decided that I want to introduce them to other boat-owners. Therefore, in 2014, I became the exclusive distributor for Europe.

Now, under the Ultra Marine brand we offer unique products manufactured on the basis of original patents that have brought a true revolution to anchoring.



Radek Masin, CEO
Ultra Marine Europe team

UltraMarine

Anchor

We don't
compromise
on quality or design,
and neither should you

Hand-made from 316L and 318NL Duplex (shank) stainless steel and hand polished. Ultra Anchors demonstrate the importance of correct weight distribution and design when setting and recovering an anchor. In fact, invert any Ultra Anchor and it will instantly recover itself into the attack position. Such performance has been achieved thanks to the innovative patented features displayed below. Each anchor is easily recoverable due to the flat pivot surface on the underside base.

Ultra Anchors are suitable for all vessel types and can be securely located on the bow roller. Standard anchor sizes range from 5 kg to 360 kg (larger anchors on request). Using Europe's best materials and fabricated by specialist engineers, Ultra Anchors are supplied with a lifetime warranty against manufacturing defects under normal conditions and use.



Check self-explanatory videos on our website
www.ultramarine-anchors.com

REINFORCED EYE

Even under the most extreme load the shank reinforced eye will not bend, break or fail.



316L STAINLESS STEEL CONSTRUCTION

The anchor features one-piece construction and has no openings or indentations to catch mud, rocks or weeds. The glossy 316L and 318LN Duplex (shank only) - gauge stainless steel is easy to clean and polish. Ultra Marine Anchor provides years of corrosion-free service, without the need to re-galvanize.

Maybe your boat also has
a very low-quality and
obsolete design anchor.



HOLLOW SHANK

The hollow shank places the centre of gravity lower in the anchor's body and closer to its penetrating tip. Ultra Marine Anchors always hit the sea floor right side up and in the "attack" position.

NON CHAIN-FOUL BAR

The clever design features of the non chain-foul bar ensures the chain cannot simply wrap itself around the shank and provides the ability to attach a trip line.

Just drop it!

FLAT UNDERSIDE

Once you begin to recover the anchor from the sea floor, it pivots on the flat section and begins to release.

**LIFE-TIME
WARRANTY**

SIDE WINGS PLATES

The side wing plates actually help the anchor bury itself deeper when pulled laterally due to a changing wind or tide. They also act to stabilize the anchor horizontally as it penetrates the seabed.

UPPER HOLDING PLATFORM

The concave base/fluke has the appearance of a spade or shovel, and provides extreme holding power as it has a greater surface area than conventional anchors.

CURVED TIP

The downward-facing, internally reinforced, reverse-curved tip allows Ultra Marine Anchors to grab and penetrate without depending on the weight of the chain.

SCRATCH-CATCH POINT

It is specially positioned at the bottom. It prevents dragging and provides an instant set when the anchor moves.

LEAD-FILLED TIP

Lead is inserted into the anchor tip, achieving the optimal weight distribution and ensuring the anchor will penetrate unfavourable seabed bottom conditions.



**Avoid risky situations!
Our swivel will do the
job for you!**



UltraMarine

Flip Swivel

The Flip Swivel incorporates unique design features

The Ultra Flip Swivel is uniquely fabricated and connects the anchor and chain without the need for additional shackles. Fabricated from 316L stainless steel and hand polished for stunning presentation on the bow, the Ultra Flip Swivel is uniquely strong and slimline, and does not require lock pins or safety wires. The breaking strength of a swivel is typically higher than the connected chain and allows 30° rotation with complete 360° swivel.

The Ultra Flip Swivel is fabricated with a unique flipping nub that assists the anchor in getting itself right-way up onto the bow roller. Combined with the rotation and 360° ability, setting and recovering your anchor is now easier and safer. Hexagonal head locking bolts prevent the need for additional grub screws to secure the swivel pins.



Check self-explanatory videos on our website
www.ultramarine-anchors.com

01



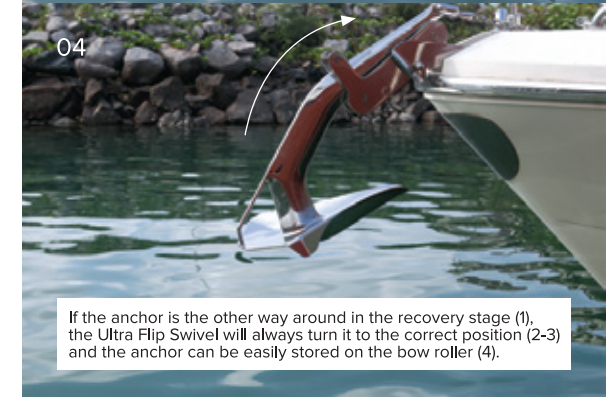
02



03



04



If the anchor is the other way around in the recovery stage (1), the Ultra Flip Swivel will always turn it to the correct position (2-3) and the anchor can be easily stored on the bow roller (4).

REAR BRIDGE

The rear bridge supports the anchor shank to allow it to rotate.

ROUNDED CORNERS

Avoid potential damage to contacted surfaces.

FLIP NUB

If the anchor is recovered up-side down the flip nub will help the anchor to correctly right itself onto the roller.

Small thing,
big difference

TEFLON* O-RING

Our internal TEFLON* O-ring stops metal friction occurring when under load, thus providing low resistance and smooth operation.

SPECIFICATIONS

The swivel chain size and breaking strength are recorded on the rear side of the swivel.

BALL AND SOCKET DESIGN

Allows for maximum movement with maximum strength. The Ultra Flip Swivel is designed to take full loads from all directions. The loose ball design also ensures the swivel is self-cleaning and, therefore, never clogs up with sediment.

We guarantee
You will never struggle again



THROAT OPENING

The opening is especially suited to the chain size and the head is machined from one piece not cast - no crevices.

HEXAGONAL HEAD BOLTS

Non-rotating square head bolt and retaining screw - cannot work loose.



Ultimate Chain

by cromox®

High quality chains with the best characteristics for offshore use

Besides Ultra Marina products we offer also stainless steel chain made in Germany from best quality stainless steel. Sizes are from 6 mm up to 13 mm and in ISO or DIN norm. You can also chose from stainless steel quality Grade 60 (AISI 316 L), Grade 60 PLUS (AISI 318 LN Duplex) and Grade 60 PLUS (Superduplex A182 F61). All chains are tested, calibrated and bright polished. Stainless steel chains help match our Ultra Anchors and Swivels the best way and having stainless steel chain helps you to store your chain in your locker and there is no need of re-galvanization in the future.

Excerpt from “Nauticest” by PaulWirkus, September 2013 “The World’s Strongest Anchor Chain!”



Our boat with all its expensive equipment and time we invested in its improvements over the past 10 years hangs by the anchor chain. In 10 years of experience one thing i can definitely say: “One who tried to skimp on his anchor chain, skimps on the wrong end.” We decided to purchase the stainless steel anchor chain because it is the most dependable chain available.



MATERIAL

Stainless steels AISI 316L (low carbon) or AISI 318LN (Duplex), specially selected for excellent chemical and mechanical properties.

FUNCTIONALITY

Highest quality welding, the rings move freely, provide smooth running of the windlass, self-stowing in the chain locker.

LONG-LASTING

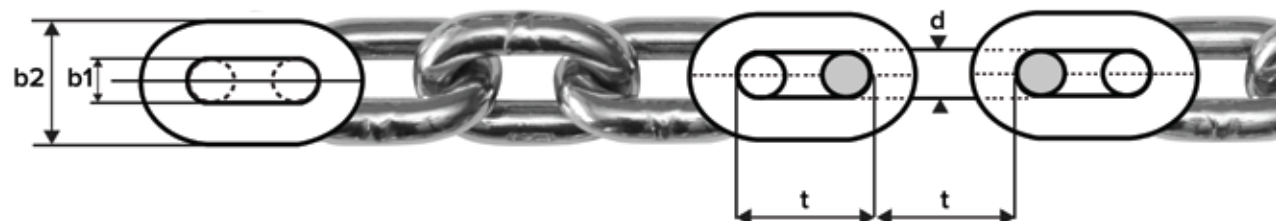
Highest corrosion resistance (even in warm waters)

CERTIFIED SAFETY

Highest breaking load in the market. Resist the strongest gale and let you sleep.

SPECIFICATIONS

Germany undisputed best chains Calibrated and tested. Bright polished for stunning presentation,



Anchor Ring

Brings two unique functions in one

Designed to replace a chain or rope weight (Kellet). In case of anchoring with limited scope (busy anchorage or limited anchorage area), the Ultra Anchor Ring increases safety by adding weight to the anchoring system. By adding extra weight on the chain, the Ultra Anchor Ring reduces the vessel swing area and works as a shock absorber, improving comfort at anchor by reducing boat movement.

The Ultra Anchor Ring will also be an important recovery tool. This is especially relevant in conditions where entering the water is not possible or preferable (such as cold water, rough sea conditions, or with dangerous wildlife around). In circumstances where you are unlucky and get caught on the bottom, using the Ultra Anchor Ring will assist in your recovery prospects.



Check self-explanatory videos on our website www.ultramarine-anchors.com



Your new anchor rescue tool!

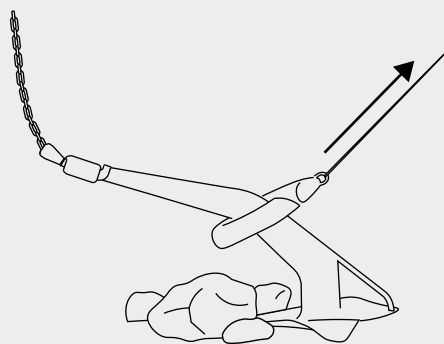
TYPE #	USABLE ANCHOR	USABLE CHAIN	INNER / OUTER DIAMETER	WEIGHT
	min-max		mm	kg
UAR 27	5-27	Ø6-Ø10	138×220	8,20
UAR 45	16-45	Ø8-Ø13	164×262	11,00
UAR 80	27-80	Ø10-Ø16	198×310	14,50



8.2 kg

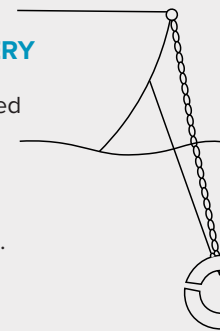
11 kg

14.5 kg



EMERGENCY ANCHOR RECOVERY

Ultra Anchor Ring used as an anchor retrieval and recovery tool to free the anchor in necessary conditions.



EXTRA WEIGHT FOR THE CHAIN

Ultra Anchor Ring permits shorter scope by reducing the chain length in cases of limited anchorage area and increases safety by adding weight to the anchoring system.



Ultraline (Dyneema and Polyester)

Best solution
not only for
stern anchoring

The Ultraline is constructed from highly polished 316 stainless steel and is available in various UV resistant line lengths ranging from 40 m - 100 m (80-330 feet). Line deployment and retrieval is simple; simply let the line pay out as needed and wind it up when done. Not to be used as a load-bearing device the flat rope must be cleated off when anchored or mooring. The Line is self storing and non-fouling and the flat rope means no more uninvited sea creatures on board.

The Ultraline with Dyneema flat floating rope with breaking load increased up to 3200 Kgf. The width of the line is 22 mm which reduces the noise problem of the previous model. Also its high breaking load and UV resistances increase its efficiency.

Compact alternative to 6mm chain

MOUNTING BOLTS

Housing bolts are also incorporated into the mounting system for rail and deck mounted installations.

ROPE GUIDES

Scale indicates approximate amount of line in use.

HIGH POLISHED 316L SATINLESS STEEL HOUSING

The 316L Stainless steel casing does not rotate; line rotates inside on hub and does not interfere with nearby equipment.

Ultraline your “instant chain”

HOLE GUIDES

Provides guide for length of line deployed and assists that the flat rope to dry quickly.

MULTI FUNCTIONAL WINCH HANDLE

316L multifunction handle fits a standard winch handle socket and includes three keys for opening deck fittings as well as a shackle buster.

TWIN ROLLERS

Teflon rollers and stainless steel guides squeeze excess water from flat rope while leading it into the reel.

FLAT ROPE

Flat ropes are UV resistant; will run through 1" shaves and when folded can fit into the jaws of a self-tailing winch. Flat rope is easily belayed to standard deck cleat.



Accessories

Ultra Bow Roller

The Ultra Bow Rollers design decreases noise and scratches, while limiting extra anchor movements. Designed to fit all of our Anchors, it also offers the extra security locking of the Anchor shank. You can also purchase just the front part of our Bow Rollers, called the Ultra Marine Bow Roller Car.

Rollers are made of delran. They do not deform in time, they work quite and upkeep is not necessary. The best results are taken especially by Ultra Anchor. Each Ultra Anchor has a different size Ultra Bow Roller. This way the best harmony is achieved. However, if it is needed, Ultra Anchors might even be used with one size smaller or bigger Ultra Bow Rollers.

Designed for
Ultra Anchor



SPECIFICATIONS

The connection holes are left to the user to decide considering the bow rollers location on the boat. The body material is 316L polished stainless steel.

“U” SHAPED RETAINING HOOP

Designed to limit the extra movements of the anchor, keeps the chain on the roller always and does not let the anchor harm the boat. It also limits the potential anchor movements during the cruise.



Ultra Hook

The Ultra Hook effectively rescues your anchor when chains become crossed - providing fast and safe recovery without the need to take any unnecessary risks.

More about Ultra Marine accessories at www.ultramarine-anchors.com



FOLLOW TRENDS !

together with legendary brands and many others

Hanse



NAUTOR'S SWAN



Hallberg-Rassy



PRINCESS



GB GRAND BANKS.



FAIRLINE



REACHING FOR THE ABSOLUTE

NUMARINE

FLEMING

X-Yachts

FJORD

AXOPAR

GOLDFISH

CRANCHI

HIMBUS

Sunreef Yachts

DRAGONFLY

JOKER BOAT

RIVIERA

TECHNOHULL

SOLARIS



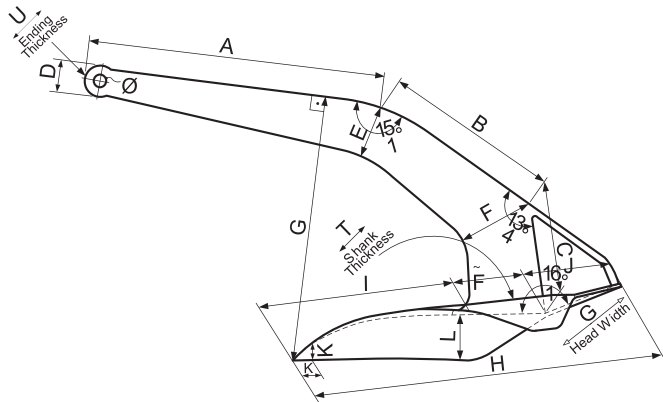
A technical drawing of a mechanical part, possibly a bracket or a housing, is shown in a light gray, semi-transparent style. The drawing includes various dimensions and specifications, such as 97, 17, 8, 22, 47, 40, 80, 22, 72, 163, 10, 354, 120, 45, 121, 527, 82, 240, 85, 50, 18, 259, 250, 210, 75, 280, 120, 14, 14, 272, and 286. The drawing is centered on a white background with a grid of light gray lines. The text 'Technical Data' is prominently displayed in the center of the drawing in a large, bold, black font.

Technical Data

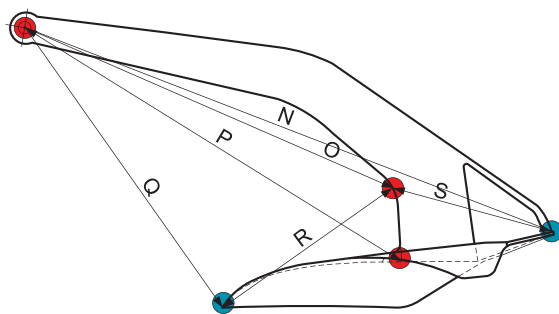
dimensions / specifications / drawings

Anchor

detailed dimensions



general dimensions

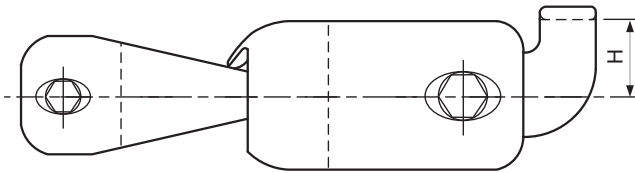


ANCHOR DIMENSION	5	8	12	16	21	27	35	45	60	80	100	130	160	200
A	293.3	343	392.6	432.2	473.2	514.5	561	610	671.4	739	796	868.8	931.1	1003
B	165.4	193.5	221.4	243.7	266.9	290.2	316	344	378.7	416.8	449	490	525.1	565.7
C	109.5	128.1	146.6	161.4	176.7	192.1	210	227.8	250.7	276	297.3	324.4	347.7	374.5
D	30	32	37	40	44	48	52	57	62	69	74	82	90	100
Ø	13	14	15	16	17	18	20	22	24	26	28	30	33	35
E	52.3	61.1	70	77	84.3	91.7	100	108.7	119.7	131.7	141.9	154.9	166	178.8
F	71.6	83.8	95.9	105.5	115.6	125.6	137	149	164	180.5	194.4	212.2	227.4	244.9
G	255.1	298.4	341.6	375.9	411.6	447.6	488	530.6	584	642.8	692.5	755.8	809.9	872.4
H	330.4	386.4	442.3	442.3	533	579.6	632	687.2	756.4	832.5	896.8	978.8	1048.9	1129.9
I	180.9	211.6	242.2	266.5	291.8	317.3	346	376.2	414.1	455.8	491	535.8	574.2	618.6
J	79.5	92.9	106.4	117.1	128.2	139.4	152	165.3	181.9	200.2	215.7	235.4	252.3	271.7
K	13.6	15.9	18.2	20	21.9	23.8	26	28.3	31.1	34.2	36.9	40.3	43.2	46.5
L	45.5	53.2	60.9	67	73.4	79.8	87	94.6	104.1	114.6	123.5	134.7	144.4	155.5
N	545.8	638.3	730.7	804.2	880.5	957.5	1044	1135.2	1249.5	1375.2	1481.4	1616.8	1732.7	1866.5
O	385.8	451.2	516.5	568.5	622.5	676.8	738	802.5	883.3	972.1	1047.2	1142.9	1224.8	1319.4
P	426.6	498.9	571.1	628.6	688.2	748.4	816	887.3	976.6	1074.9	1157.9	1263.7	1354.3	1458.9
Q	325.7	380.9	436	479.9	525.5	571.4	623	677.4	745.6	820.7	884	964.8	1034	113.8
R	201.3	235.4	269.5	296.6	324.7	353.1	385	418.6	460.8	507.1	546.3	596.2	639	688.3
S	161.5	188.9	238	238	260.6	283.4	309	336	369.8	407	438.5	478.5	512.8	552.4
T	26.7	31.2	35.7	39.3	43	46.8	51	55.5	61	67	73	79	85	92

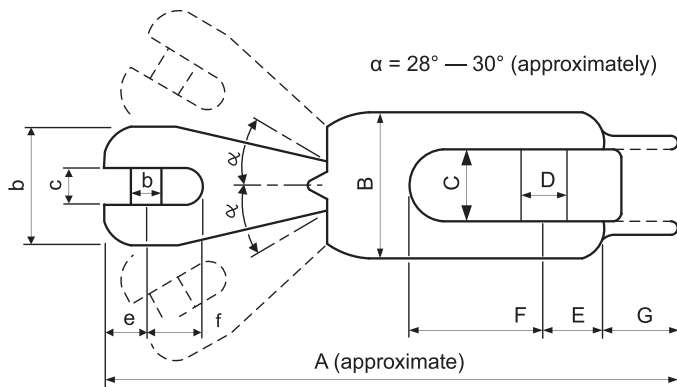
* Note: Dimensions are approximate. There may be some minor differences in actual anchors.

Flip Swivel

side view



top view

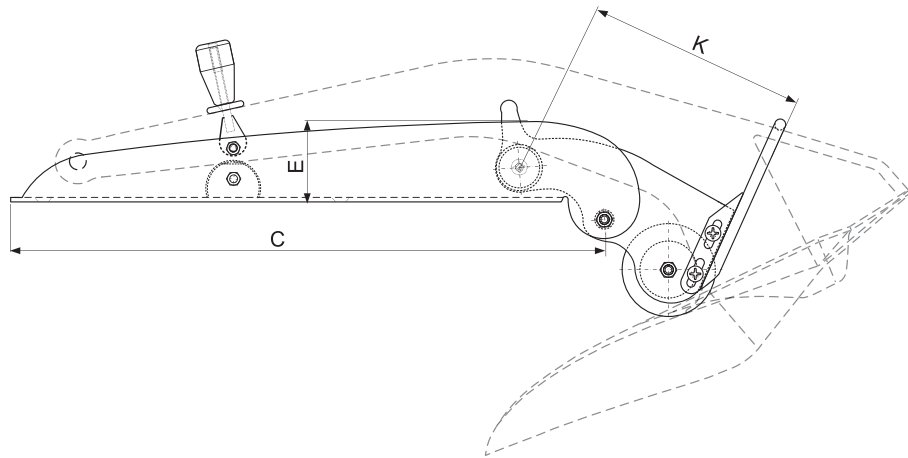


TYPE #	CHAIN DIAMETER		WHOLE LENGTH APPROXIMATELY A	CHAIN PART DIMENSIONS B×C×D×E×F	ANCHOR PART DIMENSIONS B×C×D×E×F	FLIPPING BRIDGE DIMENSIONS G×H	BREAKING LOAD		MAXIMUM ANCHOR WEIGHT	
	mm	inch					kN	lbf	kg	lbs
UFS 6 - 12	6	1/4"	121	25×7,6×7×9×11	35×16×11×13×31	14×17	38,4	8640	12	26
UFS 8 - 21	6	1/4"	147,5	30×9,4×9×11×14,5	40×19×13×16×36,5	18,5×20	56,7	12740	21	46
UFS 10 - 35	8	5/16"	168	35×11,6×11×13×17	45×21×14,5×18×40	21×22,5	90,7	20400	35	77
	10	3/8"								
UFS 13 - 60	10	3/8"	211,5	45×15,2×14,5×16,5×23	55×26×18×23×51,5	26,5×30	160,9	36200	60	132
UFS 16 - 100	12	1/2"	250	53×18,2×18×20×27	65×31×22×27×59	33×36	236,5	53200	100	220
	14									
	16									
UFS 20 - 160	16	5/8"	309	65×23×22×26×34	85×40×26×32×72	40×40,5	325,1	72300	160	350
UFS 26 - 250	18	3/4"	364	85×30×26×33×43	110×52×32×40×77	48×56	474,8	106700	250	550
	20									
	23									
UFS 32 - 360	26	1"	475	110×38×32×43×55	140×66×40×52×99	68×60	~726	~163047	360	800
	26									
	30									
	32	1 1/4"								

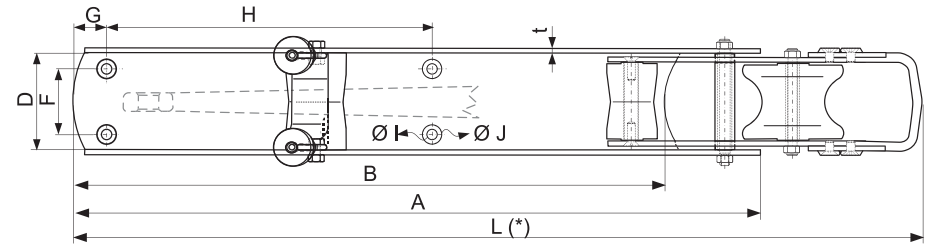
* Custom ones without flipping bridge and flipping nub can also be made.

Bow Roller

top view



side view



ANCHOR Kg	5	8	12	16	21	27	35	45	60	80	100	130	160	200
A	396.8	464.0	531.2	584.6	639.8	696.0	759.1	825.0	908.0	994.4	1076.9	1175.0	1259.3	1356.7
B	342.1	400.2	458.2	504.2	551.8	600.3	654.7	711.6	738.2	862.0	938.9	1013.7	1086.1	1170.2
C	374.5	438.0	501.5	551.9	604.0	657.0	716.7	778.7	857.2	943.4	1016.6	1109.5	1188.7	1280.7
D	55.2	64.6	74.0	81.4	89.1	96.9	105.7	114.9	126.4	139.1	149.9	163.6	175.3	188.9
E	50.5	59.1	67.7	74.5	81.5	88.7	96.7	105.1	115.7	127.3	137.2	149.7	160.4	172.8
K	141.1	165.0	188.9	207.9	227.5	247.5	269.9	293.4	322.9	355.4	383.0	417.9	447.8	482.5
L (*)	536	573	656	721	790	859	937	1018	1121	1234	1329	1450	1555	1675
t	3.0	4.0	4.0	4.0	5.0	5.0	6.0	6.0	6.0	8.0	8.0	8.0	10.0	10.0

Dimensions are in mm. If dimension "A" or "B" is given together with the order by the customer, it can be manufactured in different lengths. The bow roller chassis is either manufactured without holes to avoid potential mounting problems and the holes are drilled by the customer, or it is manufactured with holes, if the dimensions of "F, G, H, I, J" are given together with the order by the customer. Dimensions and details may change without notice.

Ultimate Chain

by cromox®

Standard Windglass Anchor Chains CDK/CIA Grade 60

AISI 316L, measures acc. to DIN 766 and ISO 4565

		DIMENSIONS MM				WEIGHT	SAFE WORKING LOAD	BREAKING FORCE
Type	Norm	d	t	b ₁ min.	b ₂ max.	kg/m	kN	kN
CDK 6	DIN 766	6	18,5	7,2	20,8	0,780	18,75	37,5
CDK 8	DIN 766	8	24,0	9,6	27,2	1,350	31,50	63,0
CDK 10	DIN 766	10	28,0	12,0	36,0	2,300	50,00	100,0
CDK 13	DIN766	13	36,0	15,6	47,0	3,900	83,50	167,0
CIA 6	ISO 4565	6	18,0	8,1	21,6	0,800	18,75	37,5
CIA 8	ISO 4565	8	24,0	10,8	28,8	1,400	31,50	63,0
CIA 10	ISO 4565	10	30,0	13,5	36,0	2,200	50,00	100,0
CIA 12	ISO 4565	12	36,0	16,2	43,2	3,200	71,25	142,5

Premium Windglass Anchor Chains CXA/CXI Grade 60 PLUS

AISI 318LN Duplex, measures acc. to DIN 766 and ISO 4565

		DIMENSIONS MM				WEIGHT	SAFE WORKING LOAD	BREAKING FORCE
Type	Norm	d	t	b ₁ min.	b ₂ max.	kg/m	kN	kN
CXA 6	DIN 766	6	18,5	7,2	20,8	0,780	19,25	38,5
CXA 8	DIN 766	8	24,0	9,6	27,2	1,350	33,00	66,00
CXA 10	DIN 766	10	28,0	12,0	36,0	2,300	52,00	104,0
CXA 13	DIN766	13	36,0	15,6	47,0	3,900	88,50	177,0
CXI 6	ISO 4565	6	18,0	8,1	21,6	0,800	19,25	38,5
CXI 8	ISO 4565	8	24,0	10,8	28,8	1,400	33,00	66,0
CXI 10	ISO 4565	10	30,0	13,5	36,0	2,200	52,00	104,0
CXI 12	ISO 4565	12	36,0	16,2	43,2	3,200	80,00	160,0

Supreme Windglass Anchor Chains CSX, Grade 60 PLUS

Superduplex A182 F61, measures acc. to DIN766

TYPE	DIMENSIONS MM				WEIGHT	BREAKING FORCE
	d	t	b ₁ min.	b ₂ max.	kg/m	kN
CSX 8	8	24,0	9,6	27,2	1,350	66,0



We believe ...

- ⚓ *Anchor is one of the main symbols in the maritime world and it has a higher philosophical meaning of security, stability, strength, home etc.*
- ⚓ *Anchoring is a vital part of the boating experience and one of the main reasons why people dream to own a boat.*
- ⚓ *We believe an anchor as something located at the bow should naturally be considered and looked at as a jewel.*
- ⚓ *Despite all the above, an anchor is still one of the most neglected items in the maritime industry.*
- ⚓ *Most of the boats worldwide are still equipped with unsafe anchor types of obsolete designs, made of the cheapest materials used on board.*
- ⚓ *ULTRA Anchor provides an uncompromised anchoring solution.*
- ⚓ *ULTRA Anchor is the best performing anchor on the market, and it is incomparable to any other anchor design.*
- ⚓ *ULTRA Anchor is hand made in Europe using the highest quality Swedish stainless-steel.*
- ⚓ *ULTRA Anchor offers the most beautiful design that makes its owner proud to have it at his bow.*
- ⚓ *ULTRA Anchor is the first anchor in history to finally fulfill the dream of anchoring.*









THE JEWEL FOR YOUR BOW

as refined as a diamond...

UltraMarine
Leader in innovation

Choose the correct Ultra Marine Anchor for you

RECOMMENDED UM ANCHOR WEIGHT		SAIL BOAT			POWER BOAT				CATAMARAN				RECOMMENDED DIN766 CHAIN DIAMETER	RECOMMENDED SWIVEL		
																
		MONO-HULL			HIGH PROFILE		LOW PROFILE		SAIL		POWER					
		BOAT WEIGHT	BOAT LENGTH		BOAT WEIGHT	BOAT LENGTH		BOAT LENGTH		BOAT WEIGHT	BOAT LENGTH		BOAT LENGTH			
kg	lbs	ton	m	feet	ton	m	feet	m	feet	ton	m	feet	m	feet	mm	#
5	11	1	5	17	1.1	5.2	17	5.7	19	0.7	4.3	14	4.6	15	5	UFS6-12
8	18	2	7	23	2.2	7.2	24	7.9	26	1.4	6.1	20	6.4	21	6	UFS6-12
12	26	3.8	9	30	4.2	9.3	31	10.2	33	2.7	7.8	26	8.2	27	6	UFS6-12
16	35	6.3	10.8	35	6.9	11.1	36	12.2	40	4.5	9.3	31	9.8	32	6-8	UFS8-21
21	46	10.2	12.6	41	11.2	13	43	14.3	47	7.3	10.9	36	11.5	38	8	UFS8-21
27	60	14.6	14.3	47	16	14.7	48	16.2	53	10.5	12.4	41	13	43	8-10	UFS10-35
35	77	21.5	16	52	23.5	16.5	54	18.2	60	15.6	13.8	45	14.6	48	10	UFS10-35
45	100	30	17.8	58	32.9	18.3	60	20.1	66	21.6	15.4	51	16.2	53	10-12	UFS13-60
60	132	43	20	66	47.1	20.6	68	22.7	74	31	17.3	58	18.2	60	12-13	UFS13-60
80	176	63	22.3	73	69	23	75	25.3	83	45.4	19.3	63	20.3	67	13	UFS16-100
100	220	85	24.5	80	93	25.2	83	27.7	91	61	21.2	70	22.3	73	14	UFS16-100
130	290	123	27.4	90	135	28.2	93	31	102	89	23.7	78	25	82	14-16	UFS20-160
160	350	174	30.4	100	191	31.3	103	34.4	113	125	26.3	86	27.7	91	16	UFS20-160
200	440	262	34.4	113	287	35.4	116	39	128	190	29.8	98	31.3	103	18	UFS26-250
250	550	400	39.2	129	438	40.4	133	44.4	146	290	33.9	111	35.7	117	20	UFS26-250
300	660	550	44	144	600	45.3	149	49.8	163	400	38.1	125	40	131	22	UFS32-360
360	800	760	50	164	830	51.5	169	56.7	186	550	43.3	142	45.5	150	23	UFS32-360

GUARANTEE: Anchor selection should be based on the largest anchor recommended, according to boat weight (fully loaded) and the boat length, as per the selection in the chart. Windage must be considered. One size smaller may be sufficient subject to recommendations. Recommended anchor size is covered by the Manufacturer Life Time Warranty (conditions apply).


12 years
on the market


15 000+
Ultra Anchor
installations


360 kg
available from
5 kg to 360 kg


186 ft
for boats and yachts
up to 186 ft

History belongs in the past Now it's up to **YOU!**



Following years of development in the maritime industry, we are **NOW** at our greatest point of performance and development.

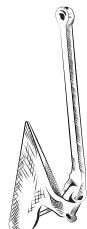
Where do you stand on the timeline?



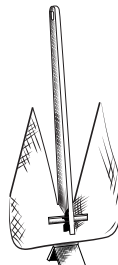
The Rock
2000 B.C



Admiralty
600 A.D



CQR
1930's



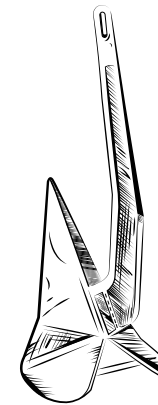
Brittany
1940's



Danforth
1940's



Bruce
1970's



Delta
1980's



Ultra Anchor
NOW

PREMIUM ULTRA SAFE

Ultra Marine
WE ARE DIFFERENT

Exclusive European distributor: Ultra Marine Europe s.r.o.
Prague Marina, Jankovcova 1587/8, 170 00 Prague 7, Czech Republic
E-mail: info@ultramarine-anchors.com, Tel.: +420 283 870 032

www.ultramarine-anchors.com